

PRINTER SPECIFICATIONS

MEDIA	
Handling	Vacuum table
Rigid media support	48"x48" & 8 lb/ft ² (122 x 122 cm & 40Kg/m ²)
Max thickness	3" (8 cm)

PRINT SPEEDS (vary depending on final configuration)	
Maximum speed	450 ft ² /hr* (CMYKx1) (42 m ² /hr), (28 Boards/hr) (4' x 4' Boards)
	900 ft ² /hr* (CMYKx2) - Staggered (84 m ² /hr), (56 Boards/hr) (4' x 4' Boards)
Standard quality	150 ft ² /hr* (CMYKx1) (14 m ² /hr), (9 Boards/hr) (4' x 4' Boards)
	300 ft ² /hr* (CMYKx2) - Staggered (28 m ² /hr), (18 Boards/hr) (4' x 4' Boards)

PRINTING	
Max print resolution	1200 dpi
Drop size	ADPT 5, 15 & 30 Picoliter
Margin	Full bleed capable
Printhead	Ricoh Gen4 or Ricoh Gen5
UV curable lamp type	LED, estimated life 18,000** hrs
Ink type	Sola UV curable ink
Ink capacity	2.5 Liter reservoirs
Connectivity	USB
Supported RIP Software	StratoFlex / Caldera / Onyx / SAI

DIMENSIONS	
Assembled dimensions (L x W x H)	106" x 79" x 59"
Weight assembled (approx)	1235 lb (560 Kg)
Shipping dimensions (L x W x H)	110" x 83" x 63"
Weight shipping (approx)	1543 lb (700 Kg)

OPERATION CONDITIONS	
Temperature	68 to 80 °F (20 to 26 °C)
Humidity	40% to 70% non-condensing
Electrical	208 - 220 VAC 50/60 Hz 20A (x3)
Warranty	Limited 1 year parts and labour

North / South America
Strategic Printing Solution Inc.
3731 San Gabriel River Parkway
STE B, Pico Rivera, CA 90660

Phone: +1 562 758 3018
Mobile: +1 562 287 2841
Email: sales@stratojetusa.com

Europe / Middle East / Africa
Strategic Printing Solution Pvt Ltd.
Unit 5 Adrienne Business Centre
Adrienne Ave, Southall
Middlesex UB1 2FJ, London

Phone: +44 7985 11 6150
Mobile: +91 9999 80 7666
Email: info@stratojetusa.com

India / Asia / Pacific
Strategic Printing Solution Pvt Ltd.
71/2 B Shivaji Marg
New Delhi 110015

Phone: +91 11 45410142
Mobile: +91 9999 80 7666
Email: info@stratojetusa.com



SHARK FB 1212

4' x 4' Rigid Substrate Printer

Max versatility

Print the widest variety of rigid and flexible substrates

Increased quality and productivity

Benefit from 1200 dpi grayscale output and feature rich design

Robust design

Experience years of production with confidence

Upgradability

Start with a solution that meets your budget and upgrade when your productivity needs grow

With 18 year in the large and grand format industry, Stratojet began production of world-class large and grand format printing solutions in 2008

*Actual results may vary/speeds does not include media setup
**LED Lamps life is only estimated, and be lower. Actual life depends on maintenance done by end user
Since, there are different printer configurations, the actual printer may differ from the images on this brochure. Subject to change without notice. This document is not a warranty. Not responsible for errors or omission in this document
This document and its content is a copyright of STRATOJET USA - © Strategic Printing Solution 2020.

SHARK FB 1212

Configure your printer with the following options:

- Single or double white ink
- Varnish clear coat option
- Double row print head configuration (CMYK x 2)



SHARK FB 1212

Start by choosing the right printer configuration as per your requirements.

Then choose between different performance levels and speciality options such as white and clear coat/varnish ink options, with the confidence.

As your print performance grows, you can upgrade by adding:

- More printheads to increase performance
- White ink to print on clear, translucent or colored media
- Clear coat/varnish to highlight or enhance an image

Your authorized Stratojet reseller can help you find the right fit for your current and future needs.

Some Exotic Printing Applications



Phone Covers



Wood



Ceramic Tiles



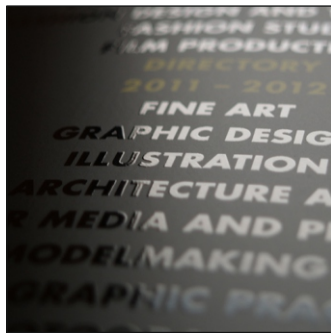
Glass



QUALITY WITH TECHNOLOGY

With 1200 dpi high definition output Shark FB-1212 uses grayscale technology to ensure prints have a smooth gradation in skin tones as well as sharp and well saturated solids and text.

Stratojet incorporates Accurate Dot Placement Technology (ADPT). The ADPT integrates the printer controller system for color management software to assign a specific drop size along the print, allowing the user to print sharp text and vibrant colors with speed.



VARNISH / CLEAR (OPTION)

Increase your profit margin by providing high value options like spot varnish coating to highlight specific features on the print, or use complete varnish coat to increase print color protection from harsh external conditions.

Also get the option to add a matte or a gloss varnish affect to your prints.



RICOH PRINthead

The Stratojet's Shark FB-1212 uses Ricoh's latest printheads, known for its high quality and performance.

Stratojet's variable drop size and grayscale technology allows the user to print in true grayscale variable drop at 5, 10, and 15 picoliter(PL) with printing resolution up to 1200 dpi, and deliver high quality output.



WHITE INK (OPTION)

Shark FB-1212 offers white ink option allowing you to expand your printing applications using the white ink system to print, under-flood, over-flood or use the spot feature on transparent, translucent or colored materials .

The FB-1212 circulation system recirculates the white ink, to prevent ink particles from settling.

UV-LED Lamps

Benefit from LED lamps that have exceptional long life and low power consumption. The Shark FB 1212 UV-LED lamps don't need to warm up and instantly cures ink dry, while generating low heat to allow more print applications that are heat sensitive.

Sharp Text

Never be afraid of printing small text. With the Shark FB 1212 small picoliter drop size, achieve sharp texts for all of your demanding print jobs.

Unparalleled Support

Built with the highest quality components, our printing solutions are designed from the ground up with serviceability in mind. Should there be a quality or printing problem, our technicians can ask for a temporary password to log in to your printer, then read, evaluate the log files and find most printer related issues remotely.

Our expertise comes from understanding on how a printer service provider works. We found the majority of service calls are due to application problems, to solve such issues, in Stratojet we start by training our technicians to be application experts before they can become a HW technician.

Limitless Application

Print on virtually any rigid media up to 3" (8cm) thick and offer your customers durable speciality printed gifts/novelties, POP displays, proofs/mock-ups, packaging, glass, ceramic tiles, aluminum composite sheets wooden blocks, phone covers and many more.

Built-in Anti-static Bars

Depending on the media, static can cause quality problems; to minimize these issues, anti static bars are built in the printer carriage.

Robust Design

To increase reliability, Stratojet uses servo motors instead of using significantly inexpensive DC motors. To ensure fidelity across the image, particularly when working on tile applications, Stratojet chose an ink delivery system that pulls the ink with vacuum, instead of a less efficient positive pressure system.

Contact an authorized reseller to demonstrate with detail the quality and reliability of Stratojet's Shark FB/FBR series printer.